



This project has received funding from the European Union's Horizon 2020 research and innovation programme under grant agreement No 723810



**Collaborative Network for Industry,
Manufacturing, Business and Logistics in Europe**

NIMBLE in a Nutshell

NIMBLE is the collaboration Network for Industry, Manufacturing, Business and Logistics in Europe.

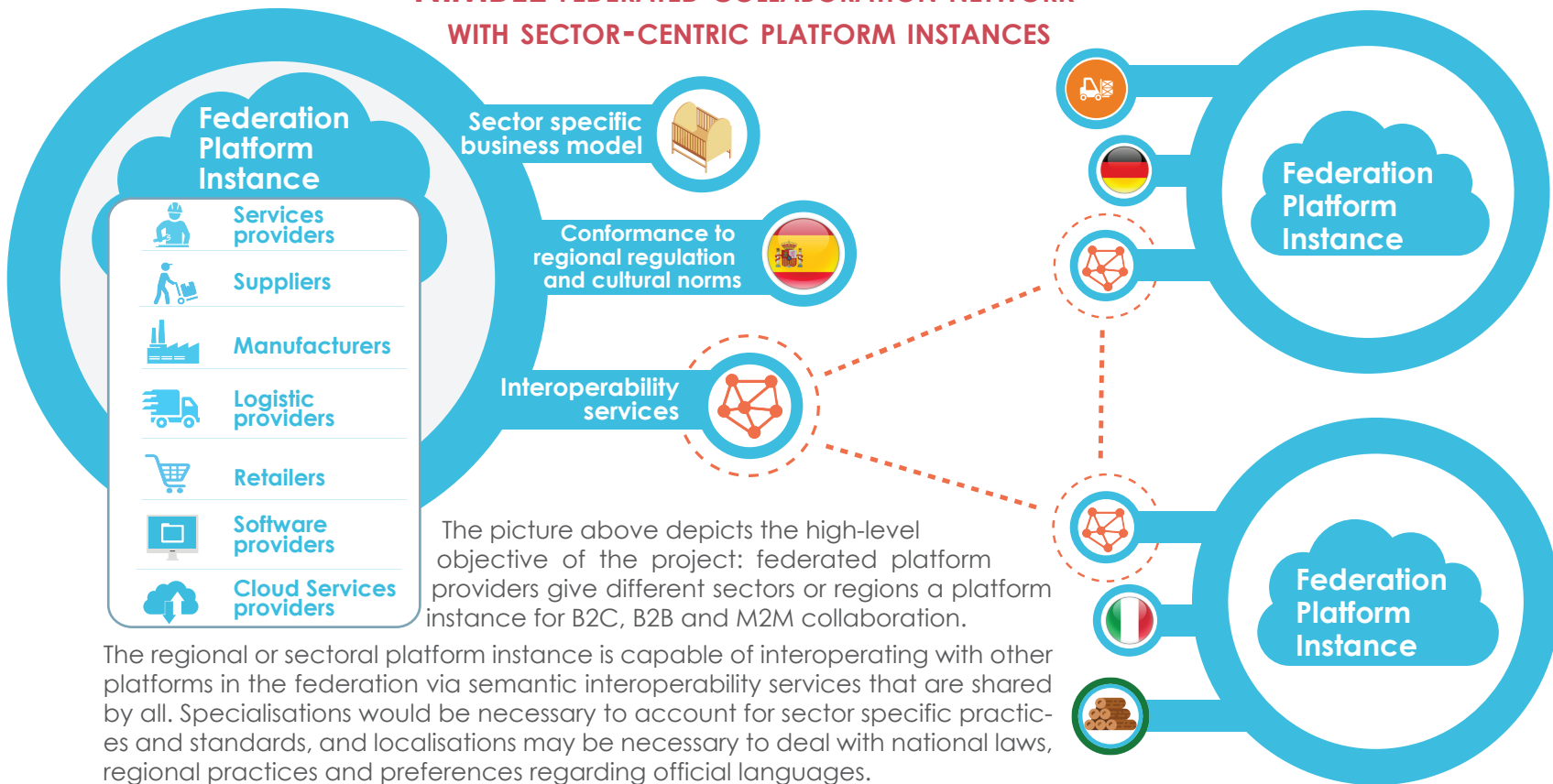
It will develop the infrastructure for a cloud-based, **Industrie 4.0, Internet-of-things enabled B2B** platform on which European manufacturing firms can register, publish machine-readable catalogs for products and services, search for suitable supply chain partners, negotiate contracts and supply logistics.



Participating companies can establish private and secure B2B and M2M information exchange channels to optimise business workflows. The infrastructure will be developed as open source software under an Apache-type, permissive license.

The governance model is a federation of platforms for multi-sided trade, with mandatory interoperation functions and optional added-value business functions that can be provided by third parties.

NIMBLE FEDERATED COLLABORATION NETWORK WITH SECTOR-CENTRIC PLATFORM INSTANCES



The picture above depicts the high-level objective of the project: federated platform providers give different sectors or regions a platform instance for B2C, B2B and M2M collaboration.

The regional or sectoral platform instance is capable of interoperating with other platforms in the federation via semantic interoperability services that are shared by all. Specialisations would be necessary to account for sector specific practices and standards, and localisations may be necessary to deal with national laws, regional practices and preferences regarding official languages.

Currently, we are piloting the platform in four industrial use cases:

White Goods in Italy, Wooden Houses in Sweden, Textile in Italy, Child Furniture in Spain.

WE ARE LOOKING FOR *FURTHER EARLY ADOPTERS AND PLATFORM PROVIDERS.*
JOIN OUR **AMBASSADOR AND SEED** PROGRAMMES!

VISIT OUR WEBSITE AND/OR CONTACT US AT:
nimble-office@salzburgresearch.at



Collaborative Network for Industry, Manufacturing, Business and Logistics in Europe.

www.nimble-project.org